

Sean Raffuse

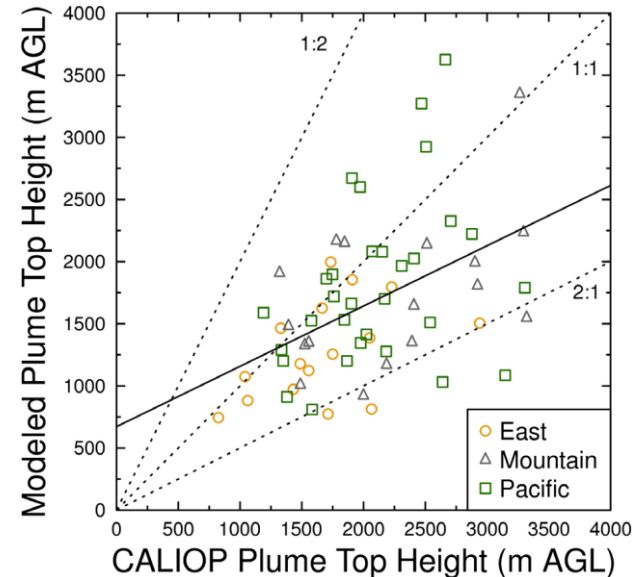
Associate Director – Software and Data
Air Quality Research Center
UC Davis

Remote sensing in decision support:

- Monitoring Network Data Validation (imagery, fire detection)
- Smoke Forecasting and Emission Inventory Development (fire detection and FRP, aerosol vertical profiles, land products)
- PM_{2.5} exposure modeling (aerosol optical depth, vertical profiles)

Interests:

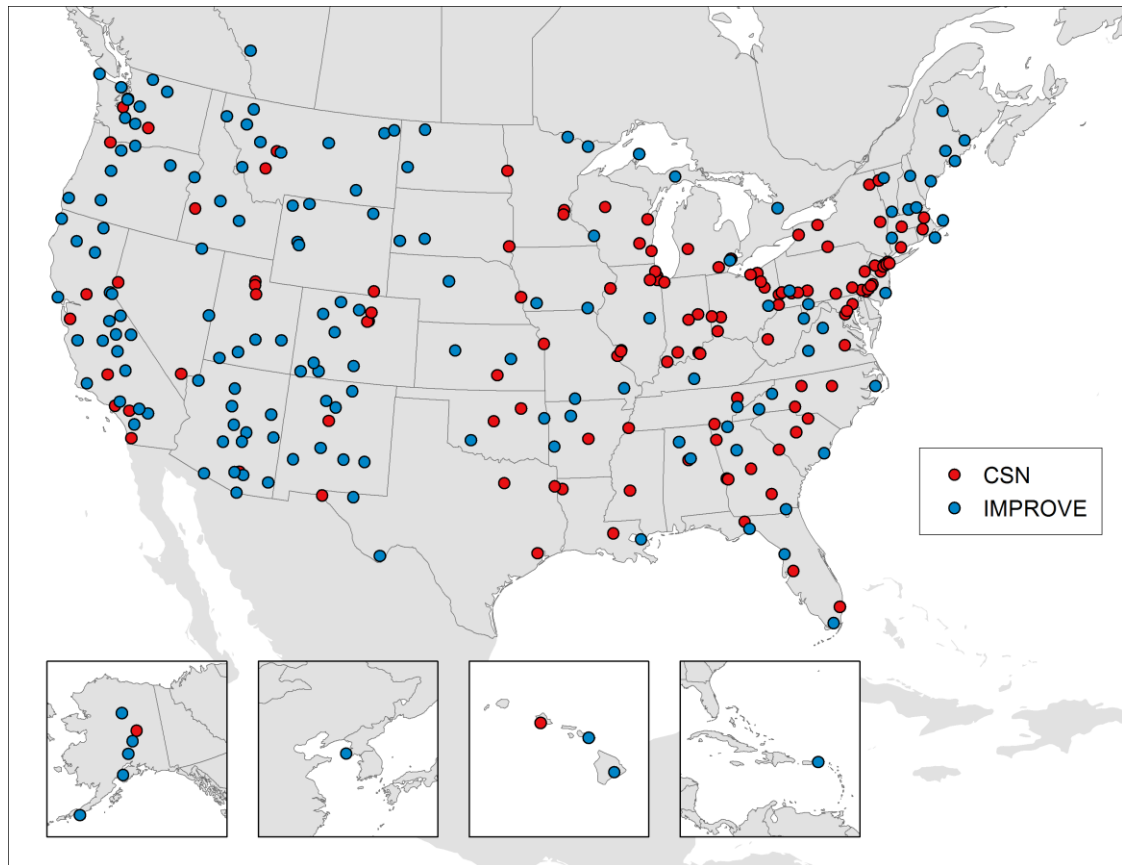
- Wildland fire emissions modeling
- Smoke impacts on human health
- Speciated particulate monitoring



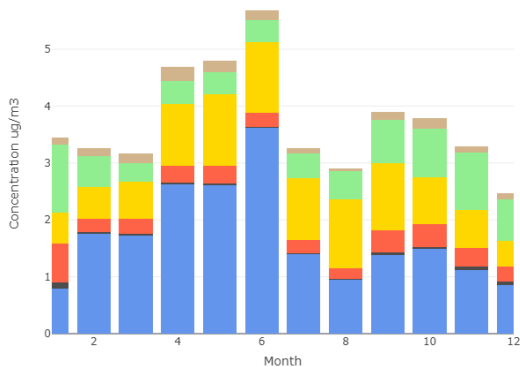
How can we help?

We perform lab analysis for 300 particulate monitors across the country

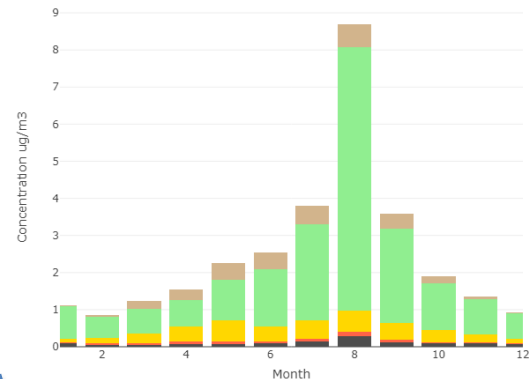
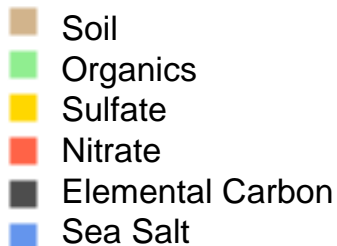
Ground-based measurements of $PM_{2.5}$, PM_{10} , sulfate, nitrate, soil, sea salt, organic carbon, elemental carbon, elements, etc.



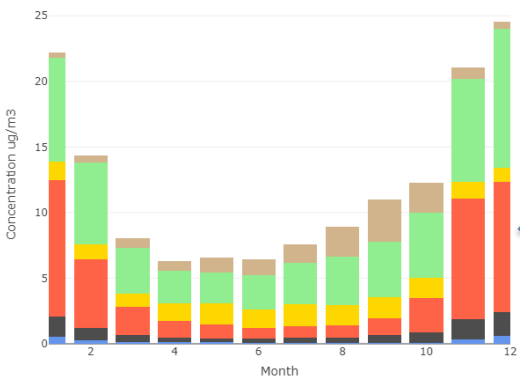
PM mass characterization



Monthly median reconstructed mass (2011 – 2017)



Fresno – winter nitrate



Sawtooth NF – summer wildfires

Everglades – sulfate & spring dust

